



A Conversation about Integrating Trauma Informed Care in the Functional Behavioral Assessment and Behavior Support Plan

Amy Hunter, *Georgetown University*

Charis Wahman, *Michigan State University*

Blair Lloyd, *Vanderbilt University*

March 17, 2023

National Center for
**Pyramid Model
INNOVATIONS**

ChallengingBehavior.org

Presenters



Amy Hunter, LICSW
Georgetown University



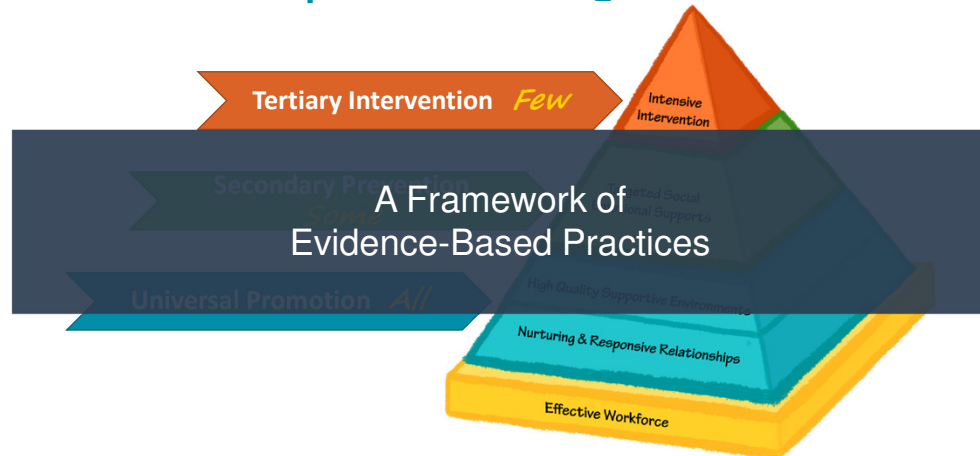
Charis Wahman, PhD,
BCBA-D
Michigan State University



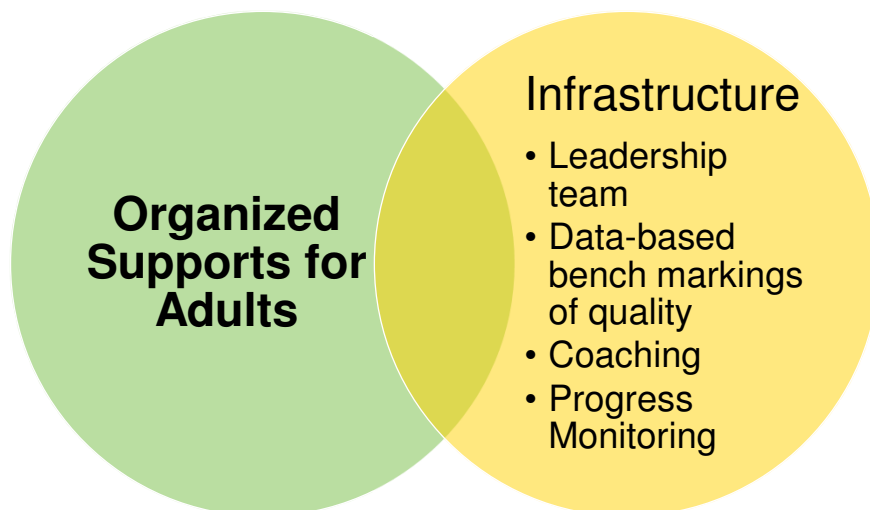
Blair Lloyd, PhD,
BCBA-D
Vanderbilt University



Pyramid Model for Promoting the Social and Emotional Competence of Young Children



EC PBIS = Program-Wide Implementation



Applied Behavior Analysis

Understanding environmental influences on socially significant behaviors



Applying this understanding to create environments that promote positive behavior change

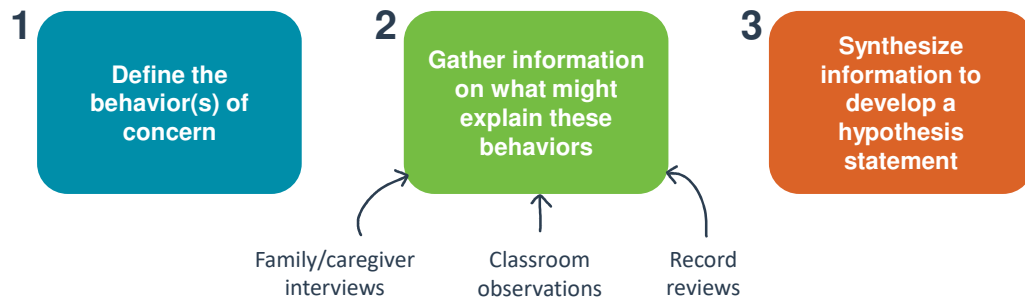
Functional Behavior Assessments and Behavior Support Plans

- A proactive alternative to punitive and exclusionary discipline practices
- Reserved for children who engage in severe or persistent challenging behavior
- Highly individualized to address unique strengths and needs

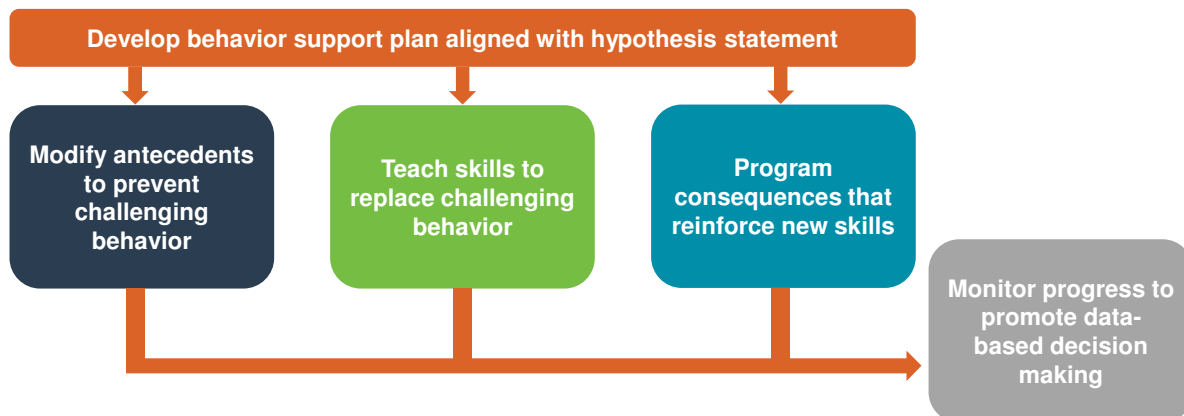


Functional Behavior Assessments

Goal: to identify *when* and *why* challenging behavior is happening



Behavior Support Plans



Critical Features of FBA/BSP



Ongoing, data-based process



Team-based approach

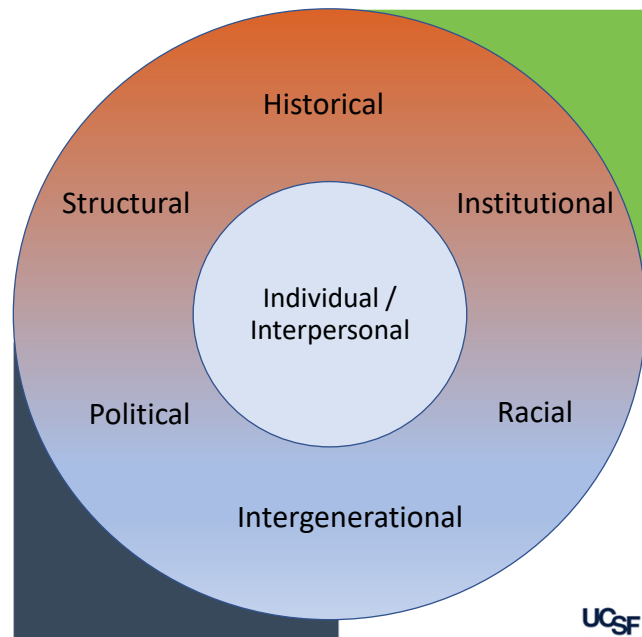


Increased access to universal supports



What do you think of when you hear the word **trauma**?

An individual's traumatic experiences are embedded within their larger context, so trauma looks much more like this...



Trauma occurs...

... when frightening events or situations overwhelm a child's ability to cope or deal with what has happened.



Think About an Invisible Backpack

- Trauma affects how children feel, behave, and think...
- The invisible backpack
 - Beliefs about self
 - Beliefs about adults who care for them
 - Beliefs about the
- How can we repack this backpack?
- How can we make children feel:
 - Safe?
 - Capable?
 - Likeable/Loveable?



SOURCE: Caring for Children Who've Experienced Trauma: Resource Parent Workshop. NCTSN (2010).



© 2021 Ann & Robert H. Lurie Children's Hospital of Chicago. All rights reserved.

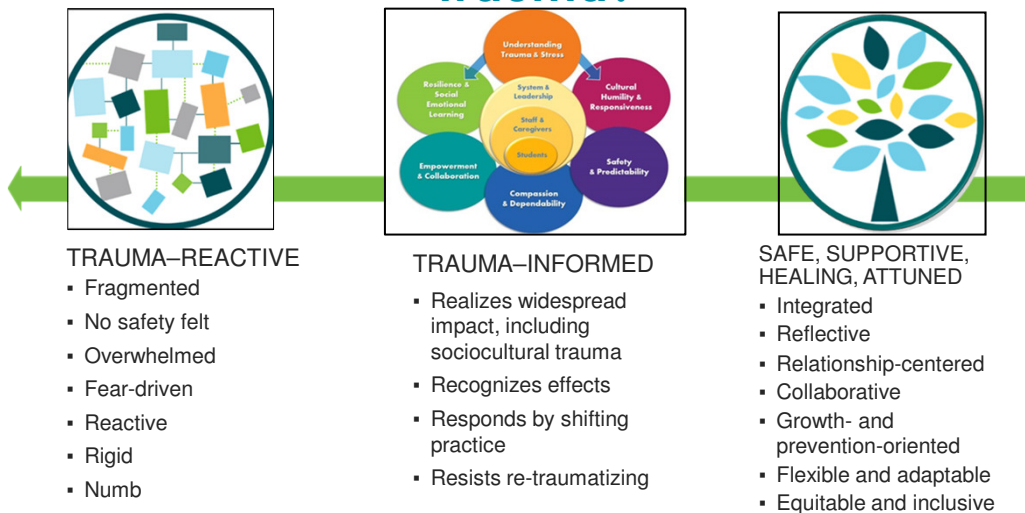
Trauma Informed Care

- A trauma-informed care approach shifts thinking from “What is wrong with you?” to “**What happened to you?**” or, more importantly, “How can I help?”
- By thinking in this way, it acknowledges the widespread prevalence and effects of traumatic experiences on children, families, and providers.

How can I help?

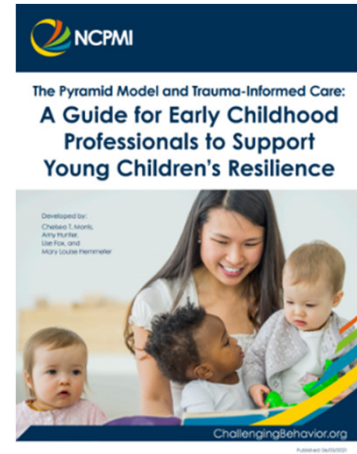


Can We Go Beyond Being Informed in Trauma?



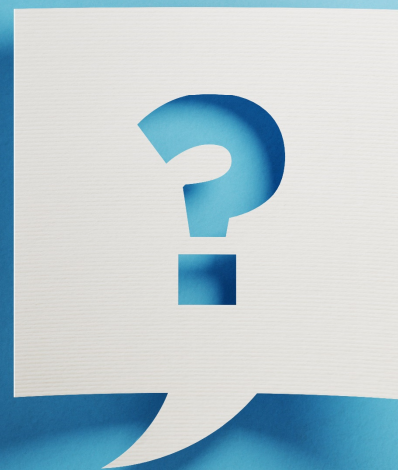
What is in The Guide?

- a **definition** of trauma,
- the **prevalence** of trauma in early childhood,
- information on understanding how **behavior** relates to trauma,
- **aligning** Pyramid Model with a trauma-informed care approach to **promote resilience** in young children and their families, and,
- suggestions for practice (specific to setting).



Questions?

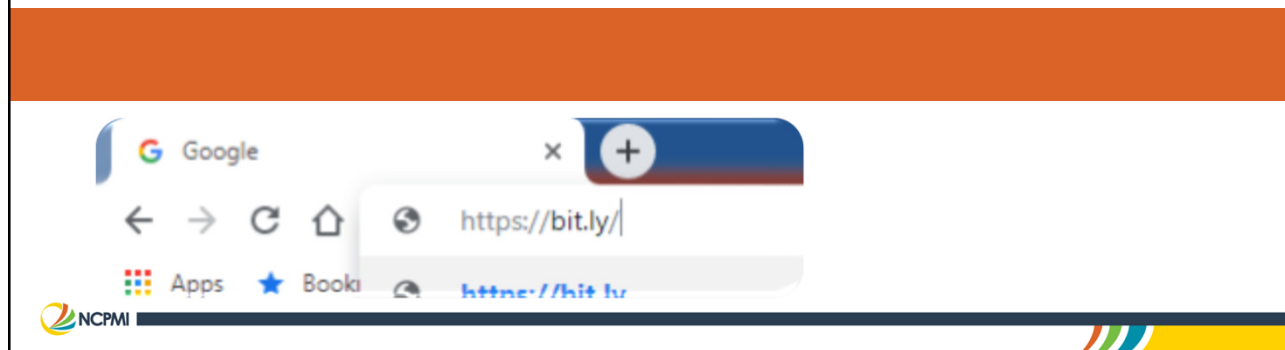
Use the Q&A panel to submit your questions.



Survey and Certificate

Recording Viewers

- Type URL during the presentation into a web browser window or scan QR Code
- *URL is case sensitive*



Visit us online at ChallengingBehavior.org


f t y Research Library

[About](#) -
 [Pyramid Model](#) -
 [Implementation](#) -
 [Training & Technical Assistance](#) -
 [Pyramid Nation](#)



When great efforts come together, amazing things happen. [About Us](#)

The National Center for Pyramid Model Innovations

The goals of the National Center for Pyramid Model Innovations (NCPMI) are to assist states and programs in their implementation of sustainable systems for the implementation of the Pyramid Model for Supporting Social Emotional Competence in Infants and Young Children (Pyramid Model) within early intervention and early education programs with a focus on promoting the social, emotional, and behavioral outcomes of young children birth to five, reducing the use of inappropriate discipline practices, promoting family engagement, using data for decision-making, integrating early childhood and infant mental health consultation and fostering inclusion.

[About Us](#)

New to the Pyramid Model?



Get the basics on the Pyramid Model.

[Start Here](#)



Thank You



The contents of this presentation were developed under a grant from the U.S. Department of Education, #H326B170003. However, those contents do not necessarily represent the policy of the U.S. Department of Education, and you should not assume endorsement by the Federal Government. Project officer, Sunyoung Ahn.

