



# Gichi-wiijikiiwaagan Indaaw!

Niminwendaan odaminotawagwaa nijikiwaaganag  
Ayaapii waabamag odaminwaagan  
aabadizid, niwii-mamaa.  
Ganabaj da-maanendamowaad nijikiwaaganag.



**Bakaan gegoo indaa-izhichige.  
Gichi-wijikiwaagan indaa-aaw.**

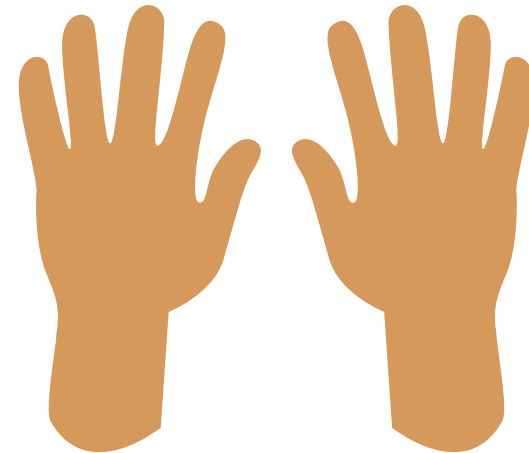


Gichi-wiijkiiwaagan indaa-aaw izhichigeyaan...

Indaa-odamin  
ina?



**Gagwedwen ji-odaminoyan**



**Weweni daanginan gegoo**



**Bebezhig aabajitooyok**



**Weweni ininaamon  
ji-bizaanayaayan**

# Gichi-wiijikiywaagan indaaw gagwedweyaan ji-odaminoyaan



**Ingagwedwe** ji-odaminoyaan weweni ikidoyaan, “Gidaa-odaminotoon ina?”

Ganabaj inga-wiindamaag, “Enh,” miinawaa indaa-odaminomin.

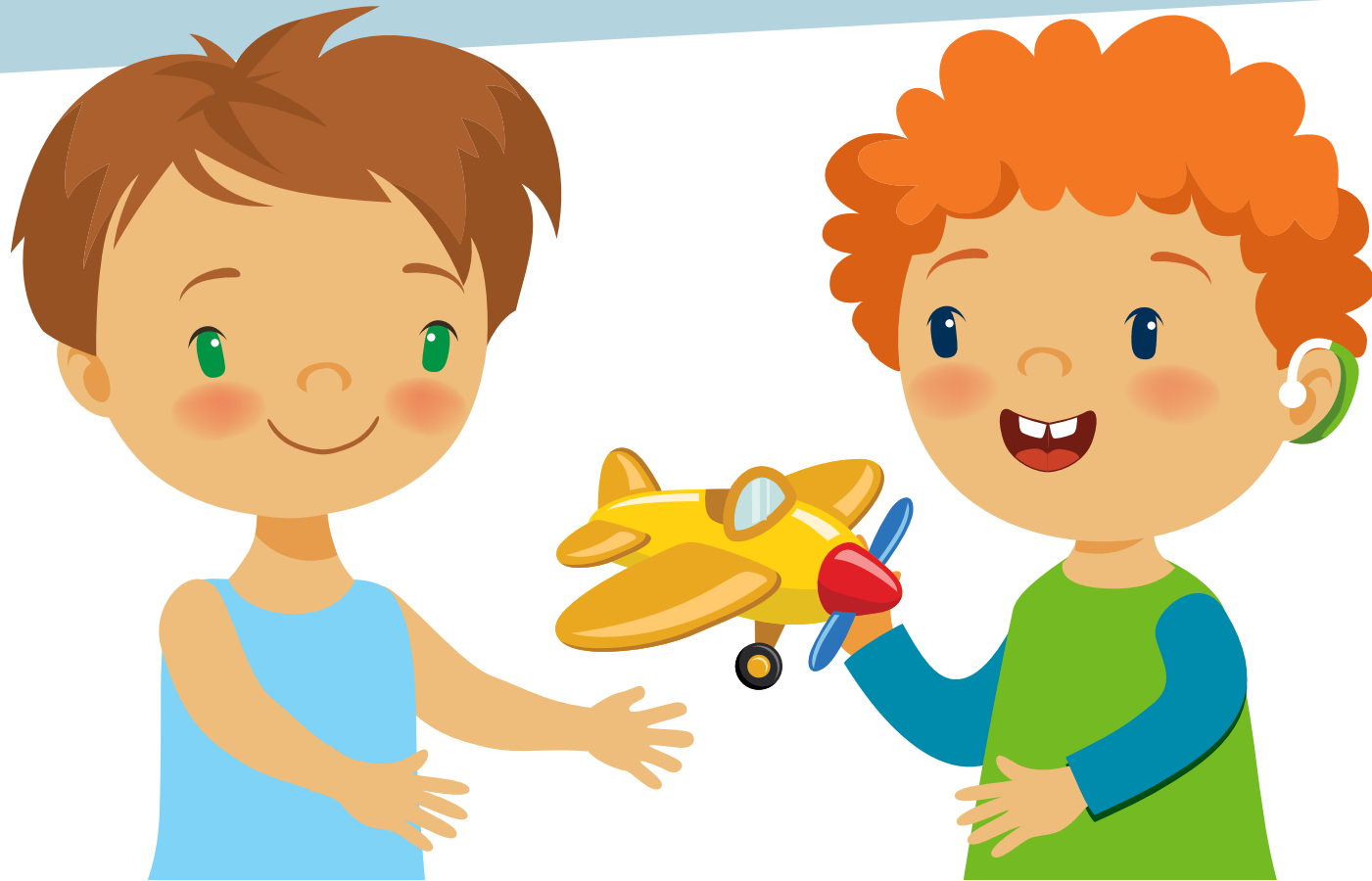
Ganabaj inga-wiindamaag, “Gaawiin,” miinawaa  
indaaw-nandawaabamaa awiyya bakaan.

Gichi-wiijikiwaagan indaaw weweni  
**daanginamaan gegoo**



**Weweni indaanginaan** gegoo giishpin aangwaamiziyaan.  
Niminawaangozimin weweni aangwaamiziyaang odaminoyaang.

Gichi-wiijikiiwaagan indaaw  
**bebezhig izhichigeyaan**



**Bebezhig izhichigeyaan** aabaji'agwaa odaminwaaganag  
bagidinag niijikiiwaagan ji-aabaji'aad gaye wiin.

Baanimaa indaa-gagwedwe, "Indaa-aabaji'aa  
na gaye niin?" Miinawaa indininamaag.

Gichi-wiijikiwaagan indaaw  
**bebezhig izhichigeyaan**



Ayaapii gagwedweyaan **bebezhig ji-izhichigeyaang**, gegoo, niijikiwaagan ikido, “Gego mashi,” miinawaa imbaabii’, gikendamaan wayiiba niinitam.

Gichi-wiijikiwaagan indaaw  
**weweni ininaamoyaan ji-bizaanayaayaan.**



**Weweni indininaam ji-bizaanayaayaan** nishkaadiziyaan  
gema gashkendamaan nising ininaamoyaan.

Indagindaan indininaamowin, bezhig, niizh, niswi.  
Mii apii giizhiitaayaan ji-oshki-inaakonigeyaan.





# Gichi-wiijikiwaagan indaaw



Indaa-odamin  
ina?

**Gagwedwen ji-odaminoyan**



**Weweni daanginan gegoo**



**Bebezhig aabajitooyok**



**Weweni indininaam  
ji-bizaanayaayaan**

Gichi-wijikiwaagan indaaw



Gichi-wijikiwaagan indaaw



Gaa-ozhibii'amowaad Lisa Grant miinawaa Rochelle Lentini (2002) ji-wiidoookawaawaad abinoojiinyan. Gaa-aanikesidood Leigh Ashley (2021).

Daa-aabadadood onow dibaajimowinan ji-wiidoookawindwaa abinoojiinyag bebezhiig gemaa maamawi dazhiikamowaad kina gegoo exhichigewaad.

Waabandan *Making a Scripted Story for Early Childhood Education and Care Environments* miinawaa *Making a Scripted Story* (endaang) gikinoo'amaadiiwinan nawaj ji-gikendaman ge-ozhibii'aman gaye giin.

#### Odaakewigamig Pyramid Model Innovations | [ChallengingBehavior.org](https://ChallengingBehavior.org)

Daga naasaabitoon o'ow mazina'igan. Mii gaawiin memwech ji-ozhibii'igaadeg gegoo geyaabi. Giishpin aanjichigaadeg, ozhibii'an gaa-ondinaman. Ozhichigaade Odaakewigamig Pyramid Model Innovations diba'igaadeg Cooperative Agreement #H326B170003 U.S. Department of Education, Office of Special Education Programs. Gaawiin odaapinigaadesinooon awegonen wezhibii'igaadeg omaa Department of Education gemaa odaake-ogimaawiwini owid.

Gaa-ozhibii'igaadeg 08/23/22

