

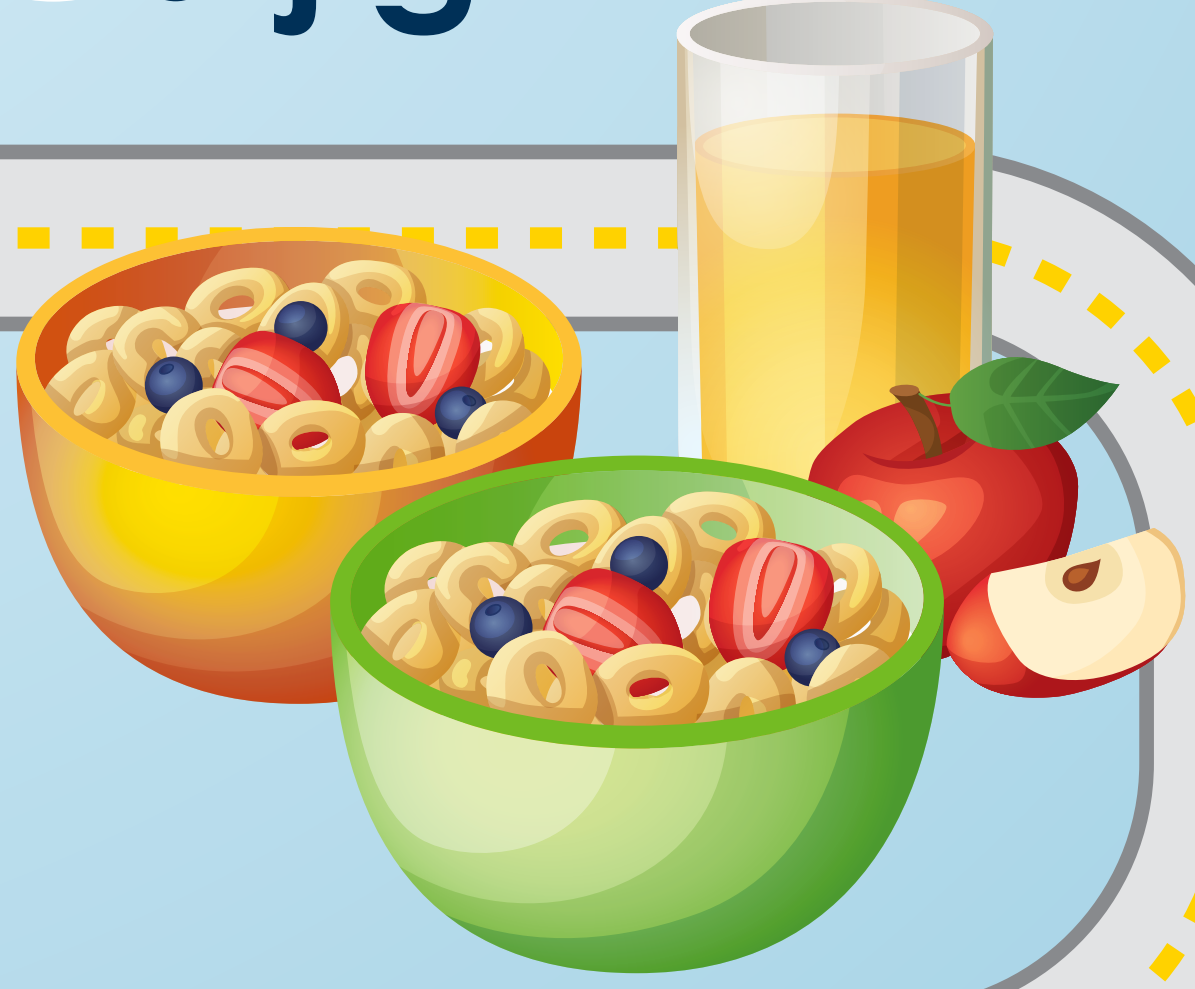
Wiidookawishinaam ji-mino-ayaayang Noongom!

Wiidookawindwaa Enawendijig



Bagidinishin ji- onaabandamaan

*Giwii-kigizhebaa-wiisin
ina onaagaans wezaawaag
gema wezhaawashkaag?*



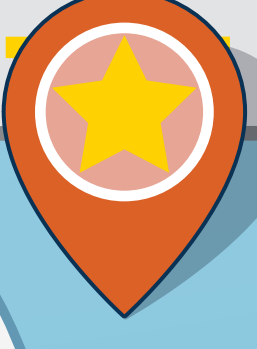
Mikwendamawishin enaakonigaadegin

*Mikwendan aangwaamiziyang,
akwaandawen akwaandawaaganing,
niisaandawen zhooshka'iganing.*



Wiidookawishin ji-gikendamaan noogitaag gegoo

*Naano-diba'igaans jibwaa-
onaagoshi-wiisining*



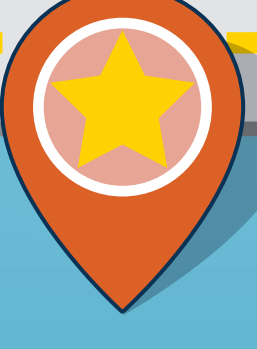
Waabanda'ishin mino-izhiwebiziyaan

*Maamakaaj, miigwech oshki-
gojitooyan. Apegish ishpenimoyan
oshki-gojitooyan gegoo.*



Wiindamawishin gwayak ge-izhichigeyaan.

*Bagizon
bagizowining akawe,
da-biite ishkwaaj.*



Waabanda'ishin waa-izhiwebak



Nawaj gegoo owidi

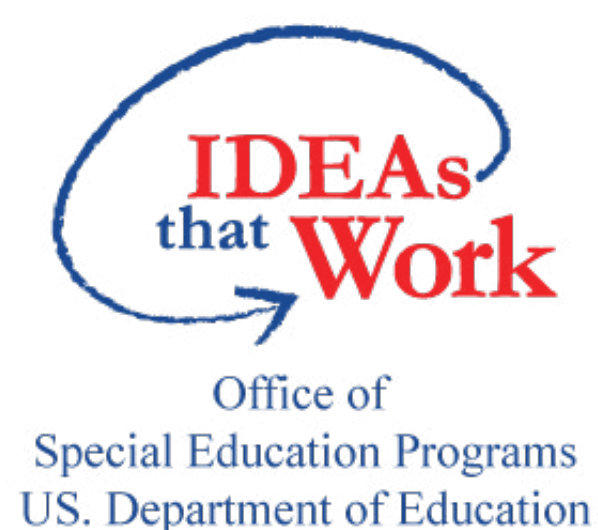
ChallengingBehavior.org/Implementation/Family.html



Odaakewigamig
**Pyramid Model
Innovations**



SOUTH FLORIDA
GABE-GIKENDAASOOWIGAMIG



Daga naasaabitoon o'ow mazina'igan. Mii gaawin memwech ji-ozhibii'igaadeg gegoo geyaabi. Giishpin aanjichigaadeg, ozhibii'an gaa-ondinaman. Ozhichigaade Odaakewigamig Pyramid Model Innovations diba'igaadeg Cooperative Agreement #H326B170003 U.S. Department of Education, Office of Special Education Programs. Gaawin odaapinigaadesinon awegonen wezhibii'igaadeg omaa Department of Education gema odaake-ogimaawin owidi.

Gaa-ozhibii'igaadeg 08/30/22