

# NEW HAMPSHIRE PYRAMID MODEL ANNUAL REPORT 2021

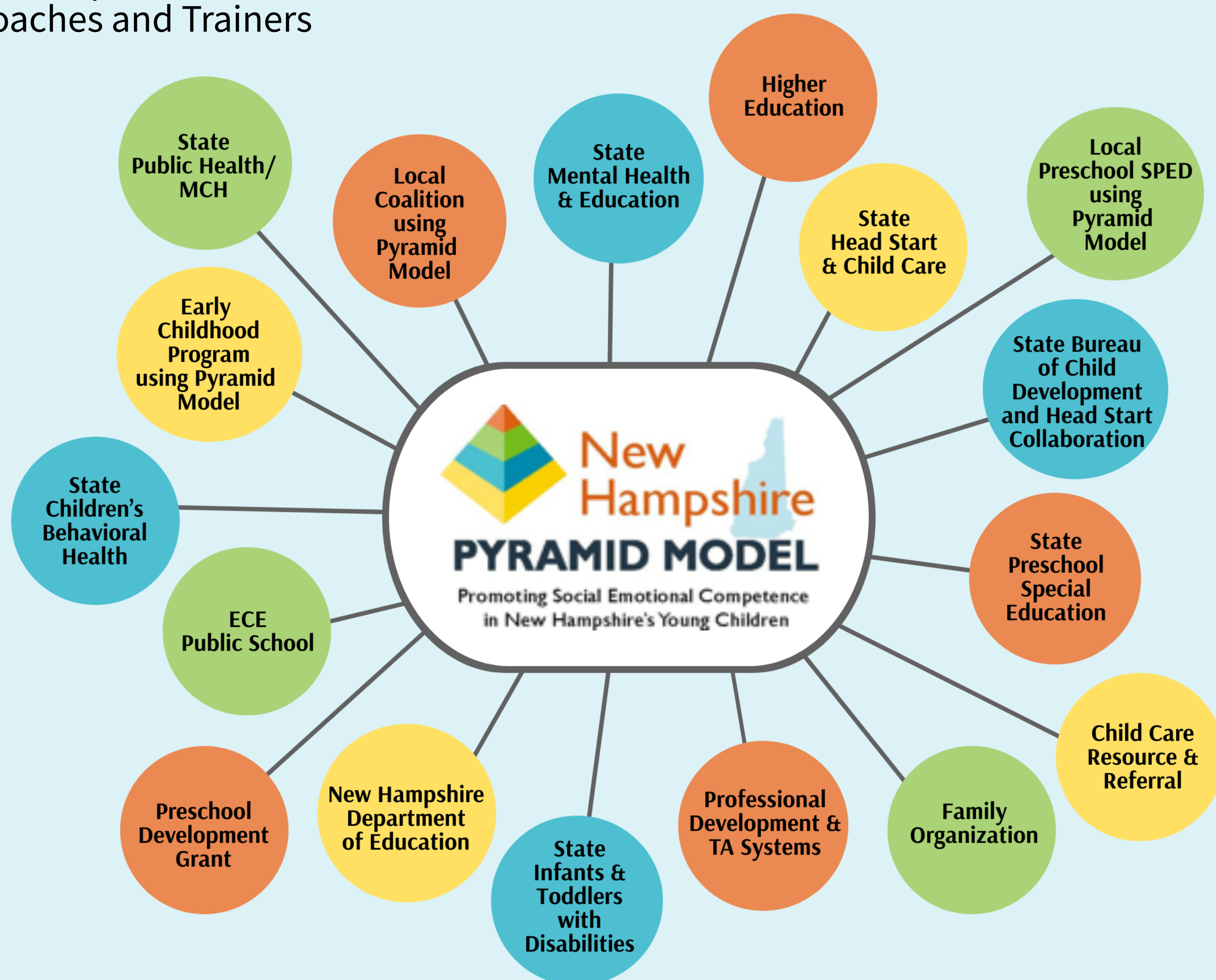
The Pyramid Model (PM) is a framework for implementing a culturally responsive and equitable multi-levelled system of supports designed to enhance social and emotional competence of young children, promote the development of supportive program policies and practices, and provide early care and education providers with practice based coaching to ensure that evidence based practices are integrated and used with fidelity.

There are 4 essential elements to being a Pyramid Model state that include:

- Cross-sector State Leadership Team
- Network of Program Coaches and Trainers
- Implementation Sites
- Data/Evaluation

## STATE LEADERSHIP TEAM

These organizations make up the cross-sector State Leadership Team (SLT) that meet monthly to implement PM statewide.



## Vision & Mission

This year, the Pyramid Model SLT updated its vision and mission statements to guide its work. The revised statements are:

### ***Vision Statement:***

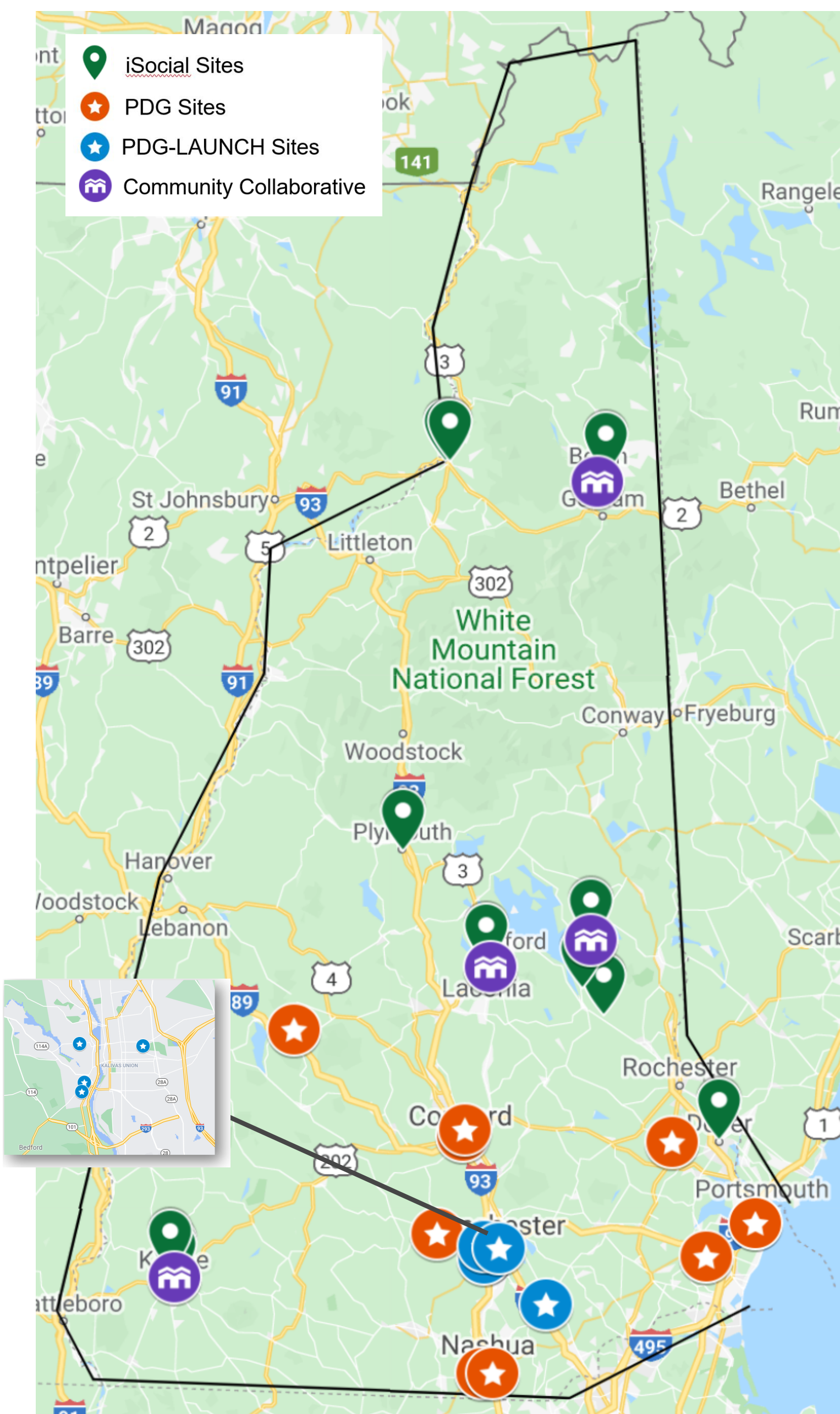
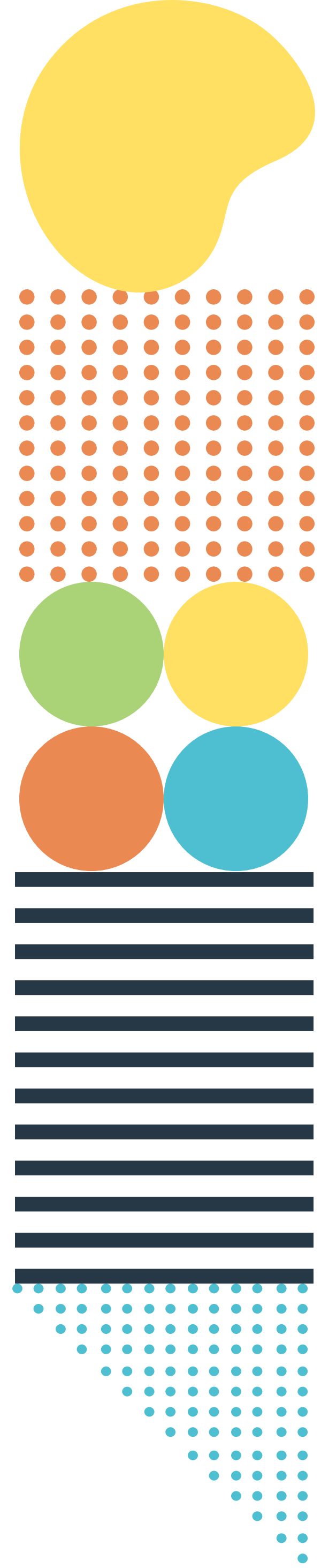
***Every New Hampshire family, early childhood program and community provides environments that nurture and promote the social emotional development and learning of all young children, birth through six years.***

### ***Mission Statement:***

***The NH Pyramid Model State Leadership Team establishes a sustainable state infrastructure that complements and support high fidelity implementation of the Pyramid Model in all early childhood environments.***

# PROGRAM NETWORK OF COACHES

In conjunction with the Pyramid Model Consortium, the SLT Professional Development work group recruited, selected, and trained 7 additional Master Cadre members. Presently, the cohort includes 14 individuals who have expertise in:



## IMPLEMENTATION SITES

The SLT through diverse funding from the New Hampshire Department of Education, New Hampshire Department of Health and Human Services, and Preschool Development Grant-Birth-5 have supported the establishment of **27** implementations sites that service roughly 2,200 children.

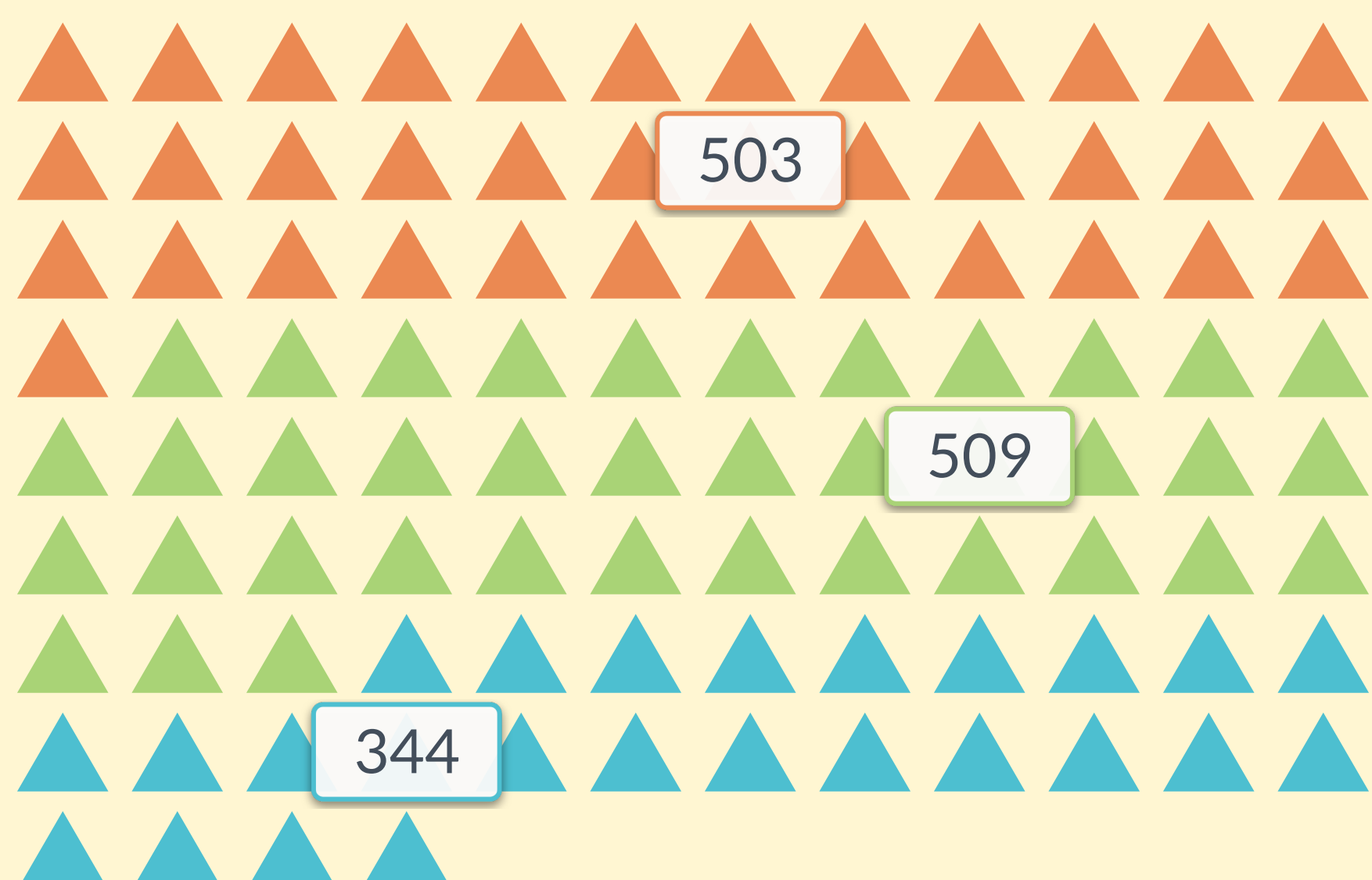
These sites have **65** practitioners with a total of **900** children directly supported by the Program Network of Coaches.

Per the collaboration of NH's Departments of Education and Health and Human Services, implementation sites have access to a number of online Pyramid Model trainings hosted by ProSolutions.



**2,171**  
Total Users

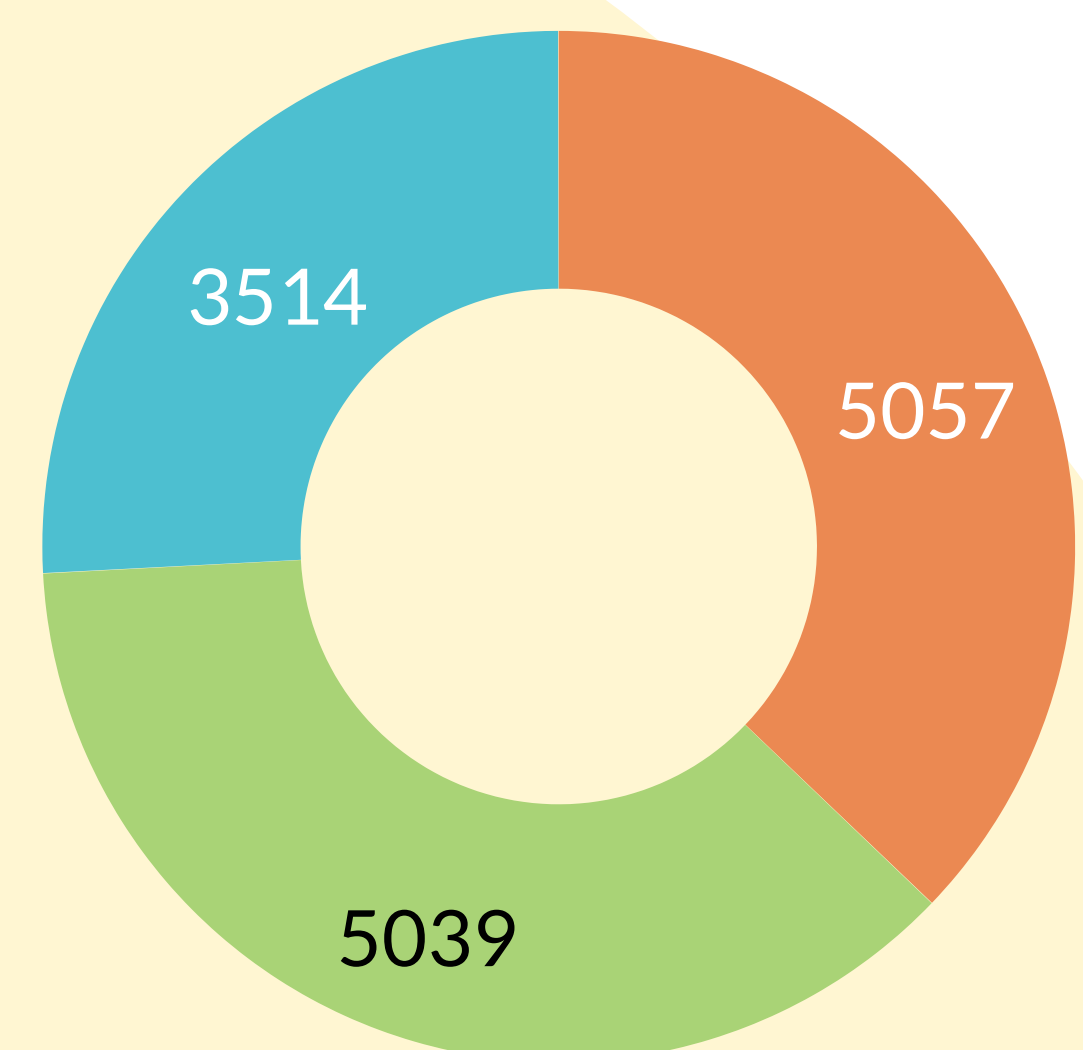
### ePyramid Courses Completed



Preschool (37.09%)  
Birth to 5 (25.37%)

Infant/Toddler (37.54%)

### Hours of Professional Development Completed



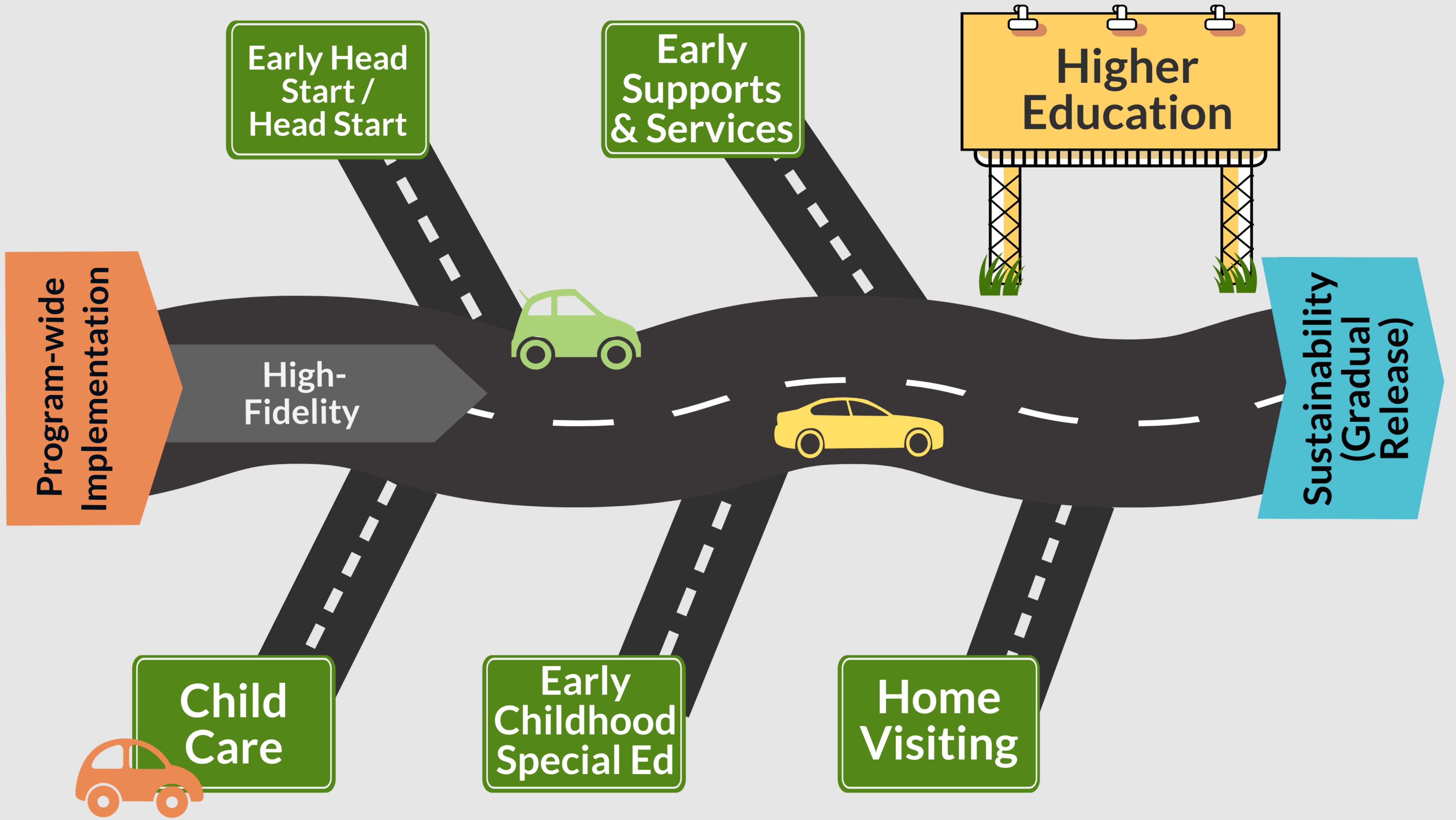
Preschool (37.16%)  
Birth to 5 (25.82%)

Infant/Toddler (37.02%)

The SLT is coordinating efforts across various Early Childhood sectors through out the state of New Hampshire. The infographic below highlights possible on-ramps to connect to Pyramid Model supports.

Promoting Social Emotional Competence in  
New Hampshire's Young Children

# Pathways to Access



## Looking Ahead...

Build Regional  
and State  
Collaborations

Integrate the  
Pyramid Model and  
iSocial Leadership  
Teams

Utilize the Program  
Network of Coaches  
to scale  
Implementation sites

Launch Granite  
Steps for Quality  
(NH's QRIS)  
Pyramid Model  
Pathway

This report was developed by the NH Pyramid Model State Leadership Team's Communication and Public Relations Workgroup with support from the Pyramid Model Consortium.

### Stay Connected!



Follow us on  
Facebook and Twitter

Subscribe to our  
e-newsletter



To learn more about Pyramid Model implementation in New Hampshire contact Joan Izen - [jiizen@seresc.net](mailto:jiizen@seresc.net)