

FAMILIES WANT TO KNOW...

Will my child be kind to others?

Will my child have friends?

How can I help my child cope with challenges and become a problem solver?

How do I help my child to have a positive self-image?

RESEARCH HAS SHOWN...

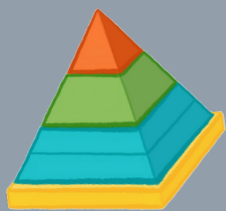
that children need social and emotional skills to be successful in the future*



WHAT ARE SOCIAL AND EMOTIONAL SKILLS

Social and Emotional Skills include the ability to:

- develop friendships
- share and take turns
- follow directions
- use problem-solving skills
- understand routines
- demonstrate self-control
- identify and manage emotions



Pyramid Model practices support children to have better social skills and less challenging behavior

A growing number of

NH COMMUNITIES & CLASSROOMS

are using

THE PYRAMID MODEL

to support children's social and emotional development



iSocial Improving Social-emotional Outcomes through Complementary Infrastructure and Leadership





The contents of this flyer were developed by the NH Pyramid Model State Leadership Team in collaboration with funding from the US Department of Education, H323A170029. However the contents do not necessarily represent the policy of the US Department of Education and you should not assume endorsement by the Federal Government. Project Officer, Sunyoung Ahn.



* Jones, D. E. Greenberg, M., & Crowley, M. (2015). Early social-emotional functioning and public health: The relationship between kindergarten social competence and future wellness. American journal of Public Health. 105, 2283-2290.

What is the Pyramid Model?

The Pyramid Model supports the social and emotional development of children by:

-  Promoting learning by building positive relationships among children, families and early childhood professionals
-  Understanding the need to develop behavior expectations and how to provide social skills support
-  Creating an environment where every child feels good about coming to school
-  Providing children individual support as needed

What is gained by using the Pyramid Model?

Families



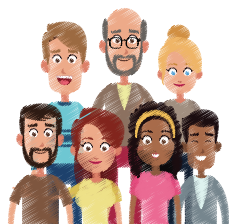
- Receive information on how to promote social & emotional skills
- Receive support for preventing and addressing challenging behavior
- Team with teachers to help children learn and grow

- Increase their social and emotional skills
- Improve their kindergarten readiness

Children



Professionals



- Have information and resources to support families
- Are effective in helping children learn social and emotional skills
- Have enhanced skills for responding to challenging behaviors

Where can I learn more?

www.pyramidmodel.org

www.challengingbehavior.org



Facebook: NH Pyramid Model

<https://sites/google.com/education.nh.gov/isocial/home>