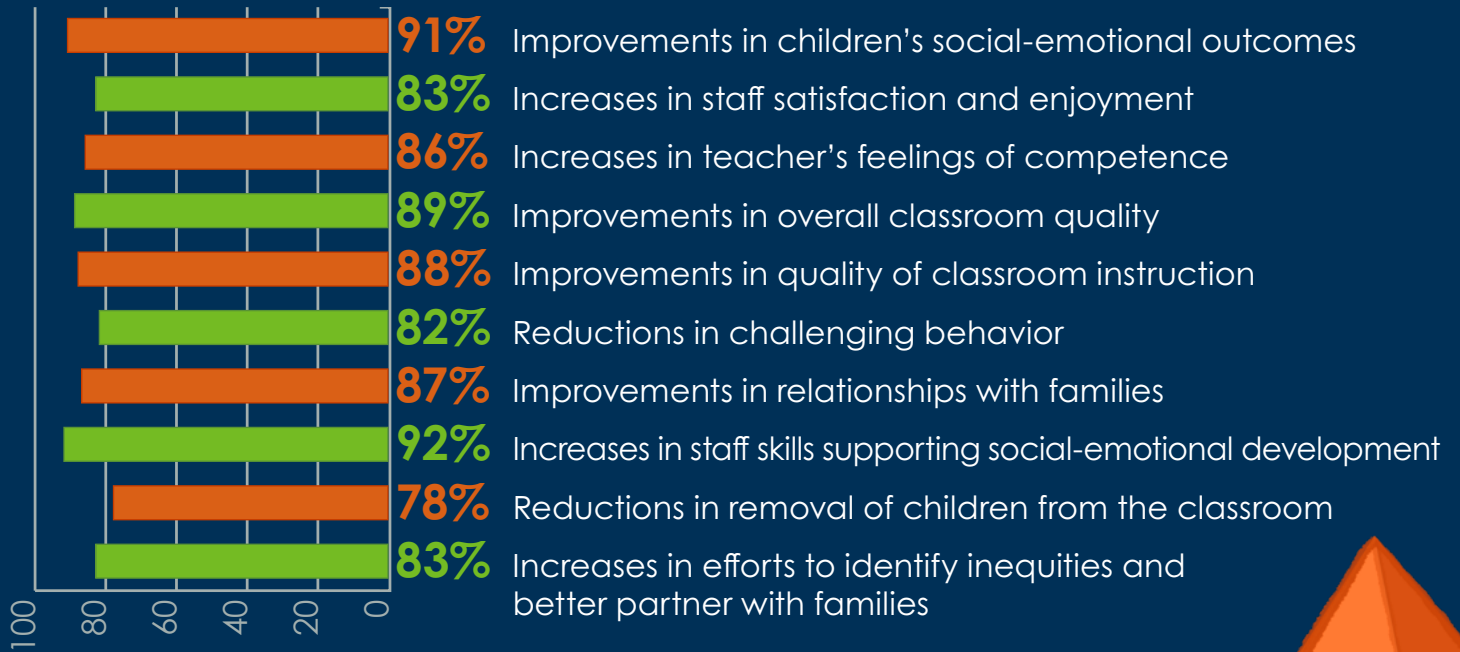


### What do teachers, administrators, and coaches identify as critical outcomes of using the Pyramid Model?\*



### In their words...

“Our providers have a better understanding of proactive behavior support strategies to use with children as well as how to teach social skills”

“Over the last couple years the severe behaviors within our building have diminished significantly”

“Staff seem to overall experience a lot less stress”



\* A survey was sent to programs in 9 states engaged in statewide implementation using the Pyramid Model state implementation and scale-up approach (State Leadership Team, Cadre of Program Implementation Coaches, Demonstration sites, and data-based decision making). (<https://challengingbehavior.cbcs.usf.edu/Implementation/State>) Ninety one (91) staff responded including teachers, assistant teachers, behavior specialists, center coordinator/administrator/program leaders, coaches, ECMHCs, early interventionists, family advocates, related service providers, and support staff.